

Dreamweaver: Getting Started

Dreamweaver Configuration:

Before setting up Dreamweaver, you'll need to gather some information.

What You Need to Know:

Hostname/name of web server:

How to connect to that server:

__FTP (File Transfer Protocol)
(Note: for KU sites check SFTP)

__Local/Network (LAN)

Folder on the server (often *public_html*) where web files are located:

Login/user name/account name:

Password:

File name and location of content to fix:

Setting Up Dreamweaver

1. Start Dreamweaver.
2. Click the **Site** menu (on the top menu bar) and click **Manage Sites....**

3. In the Manage Sites window, click the **New...** button and choose **Site**.
4. In the Site Definition window, click the **Basic** tab.
5. Give your site a name (such as Department Site or Personal Site, something that describes the site) and click **Next >**.
6. Choose **No, I do not want to use a server technology** and click **Next >**.
7. Choose **Edit local copies on my machine, then upload to server when ready (recommended)**. Then click the folder icon (📁), select or create a location on your computer's hard drive to store the web content you'll be working on, and click the **Select** button. Then click **Next >**.
8. Under **How do you connect to your remote server?** choose either Local/Network or FTP, based on the information you gathered earlier.
 - a. If you choose Local/Network, click the folder icon and browse to the drive and folder where the web content is located, click **Select**, then click **Next >**.
 - b. If you choose FTP, fill in the information required, which you gathered earlier.

Important! for KU sites **SFTP** and click **Next >**.

9. Click **No, do not enable check in and check out**, and click **Next >**.
10. Click **Done**.
11. In the Manage Sites window, click **Done** again.

That's it! Now you're ready to start using Dreamweaver to work on pages on your site.

Creating a New Basic Web Page

To create a new blank web page, you click the **File** menu then click **New**.



Dreamweaver then creates a blank, basic HTML page with all codes necessary for you to start working in Design View.

Dreamweaver: Getting Started

↑ “Put” Fixed Pages

Put means publishing a web page to the web server so that anyone in the world can access it.

CAUTION: When you “put” pages that have already been published, you are **overwriting** the version of the page on the web server with the version you’ve been working on in Dreamweaver.

1. Under **Files** on the right side, click to select the files you want to put (publish).
2. Click the “Put” button (↑).

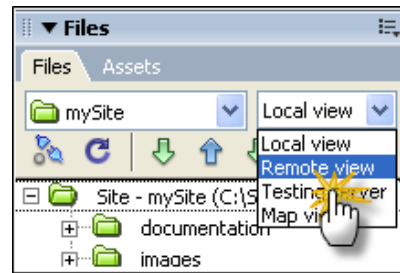
Dependent Files

When you get or put pages, Dreamweaver may ask you whether you wish to include “dependent files.” Dependent files are any files needed by the web browser to render the web page correctly, such as images and stylesheets. **When you “put” a page, if you have added an image or stylesheet to it, click “Yes” when prompted.**

↓ “Get” Pages to Edit/Fix

Get: downloading files so you can edit them.

1. Under **Files** on the right side of the Dreamweaver window, click the **Connect** button (↻).
2. Switch from **Local View** to **Remote View**, as shown:



3. Click to select the files you want to get, and click the “Get” button (↓).

Fixing Pages

1. Switch to Local View. (**Important:** this step ensures that you are changing the copy of the page on your local computer, not on the web server.)
2. Find the file you want to fix in the list and double-click it. The page will appear in the main (design) window of Dreamweaver.
3. Replace, rearrange, or add text; change or insert images; reorder lists; change or add hyperlinks; etc.

4. When you have made all the changes you want, click the **File** menu and click **Save**.

5. If you make a mistake, you can click Edit and choose **Undo**.

Note: Even if you save unwanted changes in the file, as long as you don’t “put” it (↑), the published version on the web server won’t be affected.

Code and Design Views

Code View shows the HTML and other codes that Dreamweaver “writes” based on changes made in **Design View**. The design view is much like using a word processor. Using the design view’s “What-You-See-Is What-You-Get” (WYSIWYG) interface, you can type text, create hyperlinks, insert images and much more.

You can toggle between design view, code view and a combination of both views in the upper left hand corner of the Dreamweaver document window.

