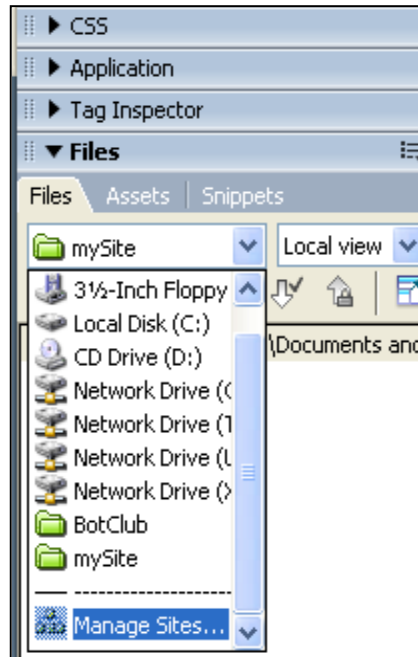


Defining Your Site

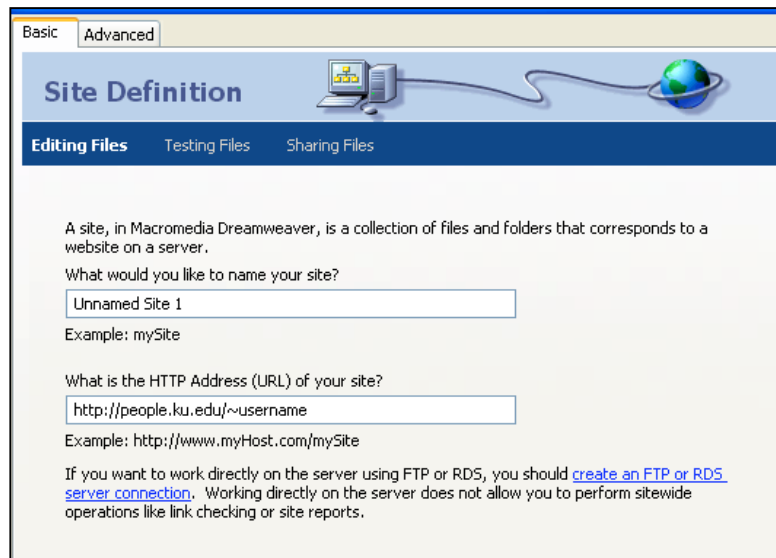
Site: A site in Dreamweaver is a collection of files and folders that corresponds to a website on a server.

Dreamweaver will prompt you to set up a site when you open the program and there are no previously set up sites. You can set up multiple sites in Dreamweaver by selecting **Manage Sites...** at the bottom of the dropdown list found on the Files panel typically found on the left side of the page.



Step by Step Directions to Define Your Site on the KU Server, People.

1. Name your site. This name is for your use only and no one else will see it.
2. What is the HTTP Address (URL) for your site? This is the address that will be typed into the web browser in order to find the site. For this example the address is <http://people.ku.edu/~username>.
3. Click on the Next button at the bottom of the frame to move to the next step.



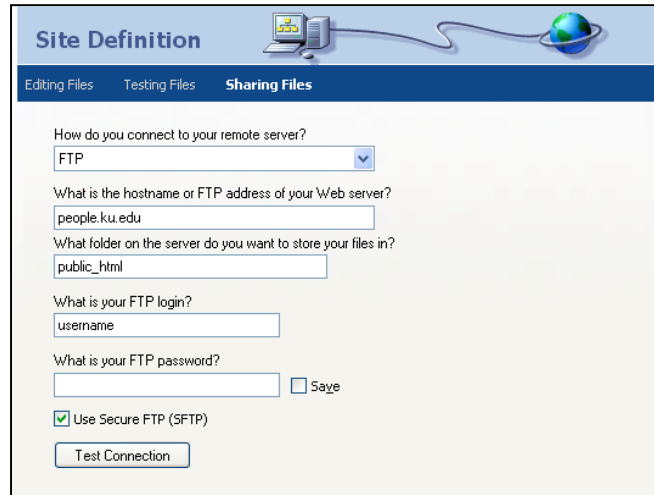
4. In the next frame Dreamweaver will ask you if you want to use server technology. Typically, the answer is no. Server technology is only needed if you plan on running more advanced services through your website.
5. Click on the Next button at the bottom of the frame to move to the next step.

Instructional Services

Dreamweaver: Defining Your Site

6. Dreamweaver will now ask you where you want to keep the local copies of your files. You can use the default settings unless you have reason to choose somewhere else (such as redirecting the files to your pindrive if you are working on a public computer.)
7. Click on the Next button at the bottom of the frame to move to the next step.
8. How do you want to connect to the remote server? Select this dropdown and choose FTP. You will now need to provide the following information:

- a. Hostname for FTP address:
people.ku.edu
- b. Folder on the server to store files:
public_html
- c. FTP login: (this is your username that you use to get your KU mail, enroll & pay, blackboard, etc)
- d. FTP password: (this is the same password that goes with your username)
- e. **Important: put a checkmark in the Use Secure FTP (SFTP) box.**



The screenshot shows the 'Site Definition' dialog box in Dreamweaver, specifically the 'Sharing Files' tab. The dialog has a title bar with 'Site Definition' and icons for a computer and a globe. Below the title bar are three tabs: 'Editing Files', 'Testing Files', and 'Sharing Files'. The 'Sharing Files' tab is active. The form contains the following fields and options:

- 'How do you connect to your remote server?' dropdown menu with 'FTP' selected.
- 'What is the hostname or FTP address of your Web server?' text box containing 'people.ku.edu'.
- 'What folder on the server do you want to store your files in?' text box containing 'public_html'.
- 'What is your FTP login?' text box containing 'username'.
- 'What is your FTP password?' text box, currently empty.
- 'Save' checkbox, currently unchecked.
- 'Use Secure FTP (SFTP)' checkbox, currently checked.
- 'Test Connection' button.

KU uses SFTP. If you don't select that box Dreamweaver will not be able to connect.

9. Test your connection. Once you confirm that it is working you are ready to go.

Important: Dreamweaver will save your password unless you tell it not to. If you are using a public computer make sure that you disconnect your site. Make sure that the SAVE option on your site definition has not been checked.

Getting Additional Help

IT Customer Service Center staff are available for computing assistance seven days a week. Call, email, or stop by in person at the Computer Center to get help.

(785) 864-8080

itcsc@ku.edu

www.technology.ku.edu/~helpdesk

Last Update: 08/31/2006